

# TREEVIEW AND MOVE HISTORY WITH LANDPARK MANAGER

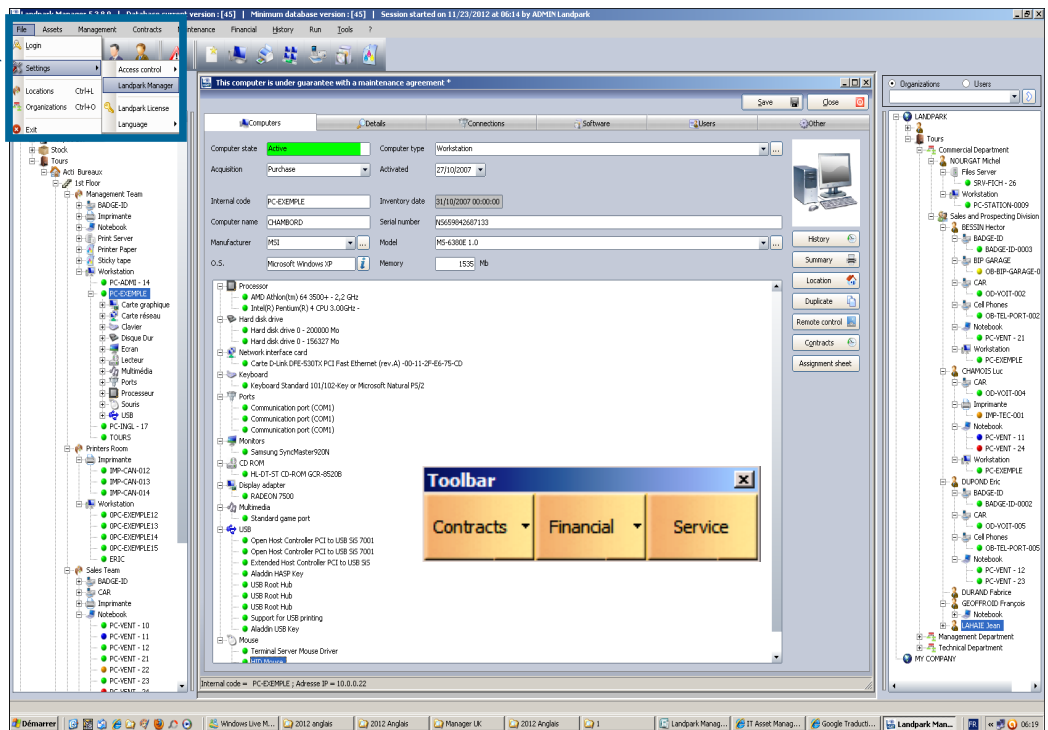
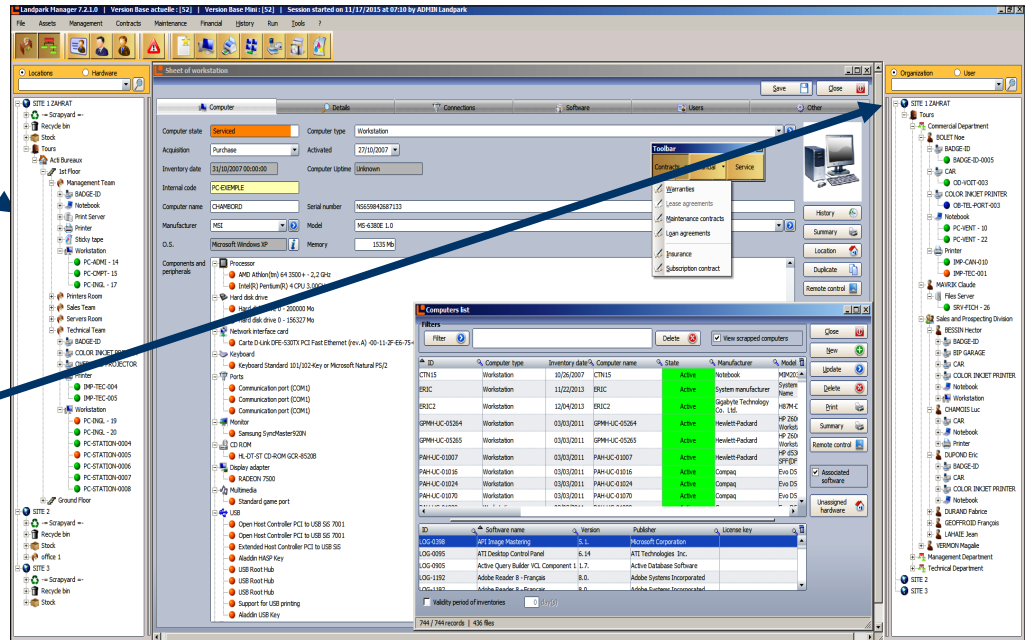
Landpark, comprehensive IT Asset Tracking and ITIL Help Desk solutions

## TREEVIEW

Location whose identifier is an item attached to one or more users

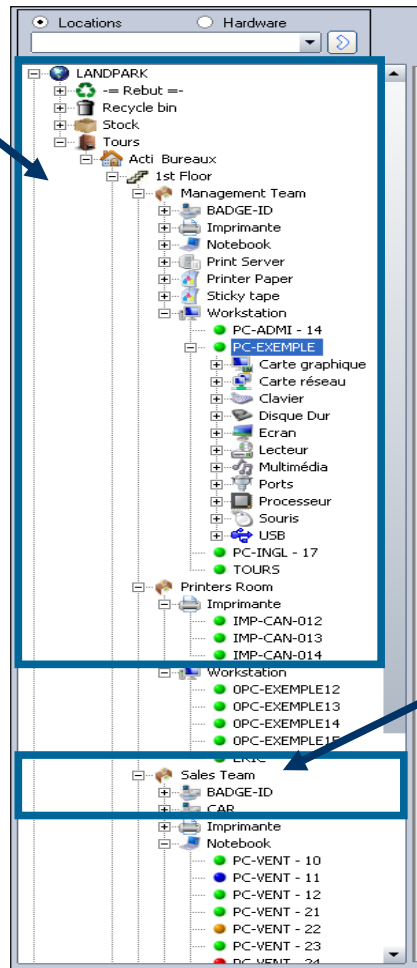
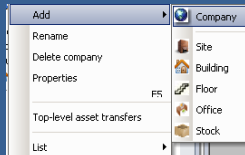
Organization whose identifier is a user attached to one or more items

Settings  
Landpark Manager



# TREVIEW LOCATION

When the mouse pointer is positioned over a company, site, building or floor of the treeview, the menu will look like this

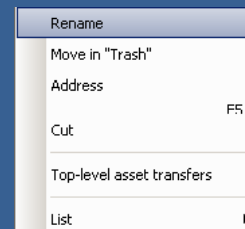


The treeview **location** allows you to manage and have an overview of locations save in the database. The identifier is an item attached to one or more users.

Each material is preceded by a colored ball to inform you about its state.

To access to the fonctions of the treeview location simply position the mouse pointer in the Treeview and click the right mouse button to bring up a menu that gives you access to different options according to the selected node.

When the mouse pointer is positioned on a office or a stock treeview, the menu will look like this



## Note:

*Locations in the treeview contains at least one company and a stock*

*Those two levels can not be edited nor deleted*

*Moving locations is done by drag and drop*

## Description of the menu:

**Add:** Adds a node in the treeview.

**Rename:** Allows you to edit the selected node.

**Delete company:** Deletes the selected node and place the material in the trash.

**Empty Trash:** To empty the trash. The data is then permanently deleted from the database.

**Properties:** Displays, depending on the level of the selected node (company, site, building, floor, office, stock), the properties of each level.

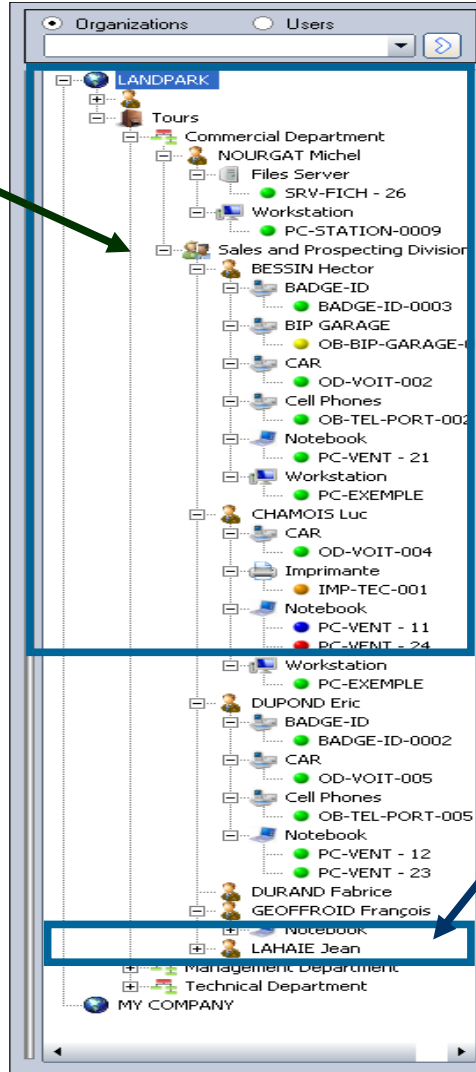
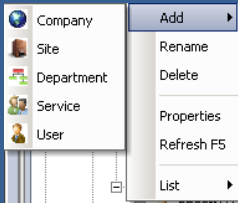
**Cut:** Cuts off part of the Treeview to paste to another location in the tree.

**Paste:** Pastes the previously cut Treeview element at the current position in the tree.

**List:** Provides access to either the list of companies, is a complete list of locations.

# TREEVIEW ORGANIZATION

When the mouse pointer is positioned over a company site, department or service tree, the menu will look like:

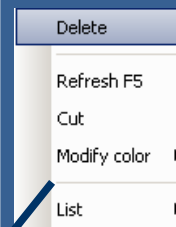


The **Organization** treeview allows you to manage and have an overview of organizations or save the database depending on the selected node.







The identifier is a user attached to one or more items.

Each material is preceded by a colored ball to inform on its state.

To access the treeview "Organization", simply position the mouse pointer in the treeview and click the right mouse button to bring up a menu that gives you access to different options, according to the selected node.



When the mouse pointer is positioned on a user treeview, the menu will look like this.

-  **active:** the equipment is in use
-  **in stock:** the material is stored in a storage area awaiting to be in active
-  **serviced:** there is a request for assistance on the hardware, but the hardware is still in its original location
-  **maintenance:** there is a request for maintenance on the equipment and left for maintenance
-  **on loan:** loan on material made to a user
-  **discarded:** the material is the recycle bin ready to be destroyed and removed from the base

## Description of the menu:

**Add:** Adds a node in the treeview.

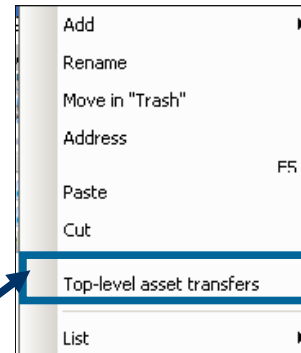
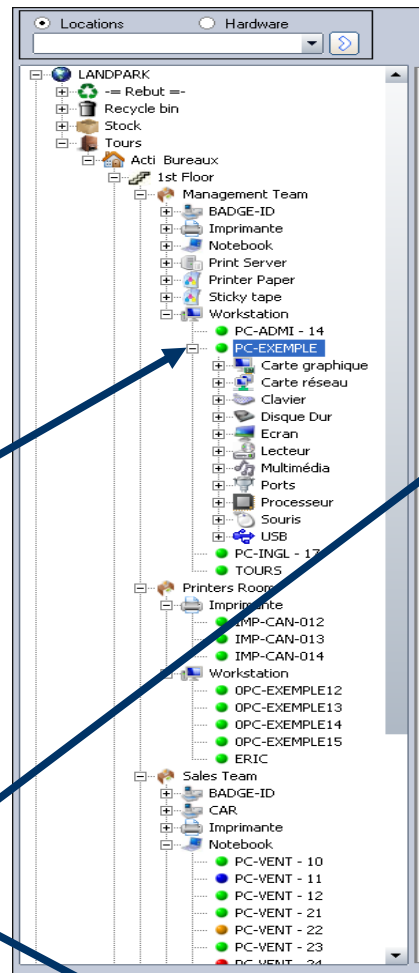
**Rename:** Allows you to edit the selected node.

**Delete :** Deletes the user.

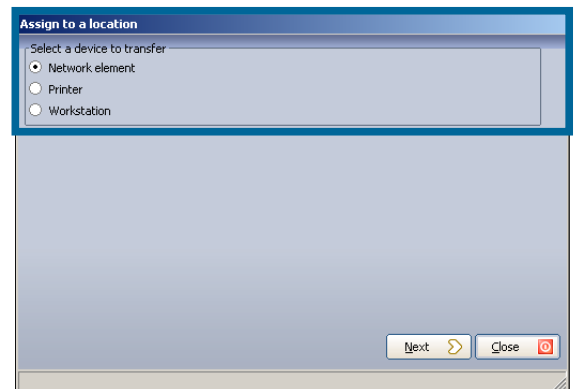
**Properties:** Displays, depending on the level of the selected node (company, site department, service, user), the properties of each level.

**List:** Provides access to either the list of users.

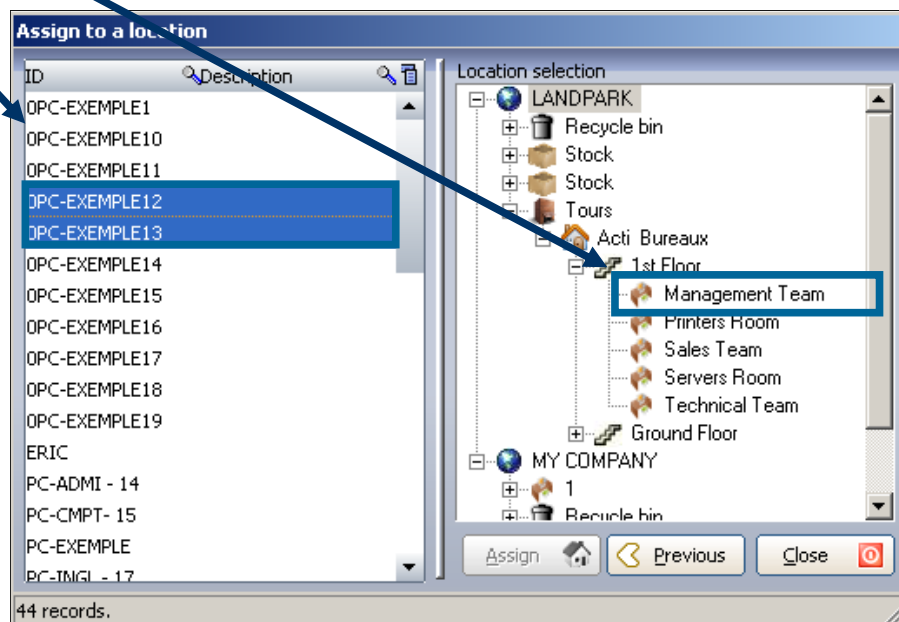




Drag and Paste  
to transfer an item to  
another office or stock



Top-level asset trans-  
fers allows you to move  
quickly all materials  
that are not localized



# History



## Hardware move history

Tickets

Hardware move history

**Deployment history**

Filter transferred items: **All assets** Between 28/11/2012 and 28/11/2012

Company filter : **All assets**

ID	Transfer	Initial state	Destination state
OPC-EXEMPLE1	28 Network interface card	Active	Active
OPC-EXEMPLE17	28 Hard disk drive	Active	Active
OPC-EXEMPLE16	28 Network element	Active	Active
OPC-EXEMPLE15	28 Printer	Active	Active
OPC-EXEMPLE14	28 Software license	Active	Active
OPC-EXEMPLE13	28 Peripherals	Active	Active
OPC-EXEMPLE12	28 Consumables	Active	Active
OPC-EXEMPLE11	28/11/2012 ADMIN Landpark	Active	Active
OPC-EXEMPLE10	28/11/2012 ADMIN Landpark	Active	Active
OPC-EXEMPLE18	28/11/2012 ADMIN Landpark	Active	Active

10 records

**Initial location**

Company: LANDPARK  
Site: Tours  
Building: Acti Bureaux  
Floor: 1st Floor  
Stock: Printer Room  
Computer:

**Destination location**

Company: LANDPARK  
Site: Tours  
Building: Acti Bureaux  
Floor: 1st Floor  
Stock: Management Team  
Computer:

Buttons: Close, Delete Selected, Delete All, Print, Modify the date

Filter by type of equipment. You can see origin and destination states and then export the results to Excel

	A	B	C	D	E
1	ID	Transfer date	Transferred by	Initial state	Destination state
2	OPC-EXEMPLE1	28/11/2012	ADMIN Landpark	Active	Active
3	OPC-EXEMPLE17	28/11/2012	ADMIN Landpark	Active	Active
4	OPC-EXEMPLE16	28/11/2012	ADMIN Landpark	Active	Active
5	OPC-EXEMPLE15	28/11/2012	ADMIN Landpark	Active	Active
6	OPC-EXEMPLE14	28/11/2012	ADMIN Landpark	Active	Active
7	OPC-EXEMPLE13	28/11/2012	ADMIN Landpark	Active	Active
8	OPC-EXEMPLE12	28/11/2012	ADMIN Landpark	Active	Active
9	OPC-EXEMPLE11	28/11/2012	ADMIN Landpark	Active	Active
10	OPC-EXEMPLE10	28/11/2012	ADMIN Landpark	Active	Active
11	OPC-EXEMPLE18	28/11/2012	ADMIN Landpark	Active	Active
12					

