



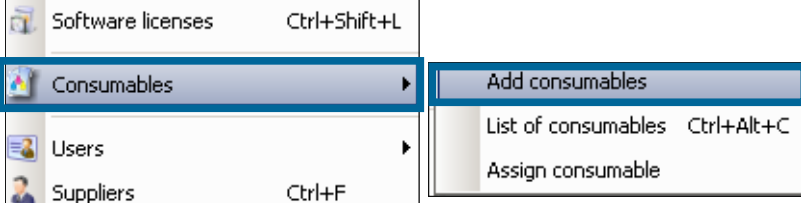
# MANAGE CONSUMABLES WITH LANDPARK MANAGER

Landpark, comprehensive IT Asset Tracking and ITIL Help Desk solutions

Management



Consumables management



Family	Internal code	Designation	Manufacturer	Model	Consumable state	Date transferred	Price before tax
Printer	CONS0002	Laser Printer Paper	Hewlett Packard	740	Active	10/10/2007	18,00 €
Printer	CONS0003	Laser Printer Paper	Hewlett Packard	740	Active	22/10/2007	14,00 €
Printer	CONS0004	Laser Printer Paper	Hewlett Packard	740	Active	12/09/2011	12,00 €
Printer	CONS0005	Laser Printer Paper	Hewlett Packard	740	Active	12/09/2011	12,00 €
Toner	CONS0017	Black Toner	Tectronic	740 Plus	In store		0,00 €
Toner	CONS0018	Black Toner	Tectronic	740 Plus	In store		14,00 €
Sticky t	CONS0031	1 cm wide sticky tape	Scotch	10 cm	Active	06/10/2007	15,00 €
Sticky t	CONS0032	1 cm wide sticky tape	Scotch	10 cm	Active	30/10/2007	10,00 €
Sticky t	CONS0033	1 cm wide sticky tape	Scotch	10 cm	Active	23/10/2007	
Sticky t	CONS0034	1 cm wide sticky tape	Scotch	10 cm	Active	25/09/2007	

Consumables list

In stock		Active		
Catalog ID	Designation	Number	Total price	Stock location
CAT-CONS-002	Black Ink Cartridge	5	125,00 €	LANDPARK \ Stock
CAT-CONS-001	Printer Paper	15	146,00 €	LANDPARK \ Stock
CAT-CONS-003	Black Toner	2	14,00 €	LANDPARK \ Stock

Consumables in stock ready to be in service

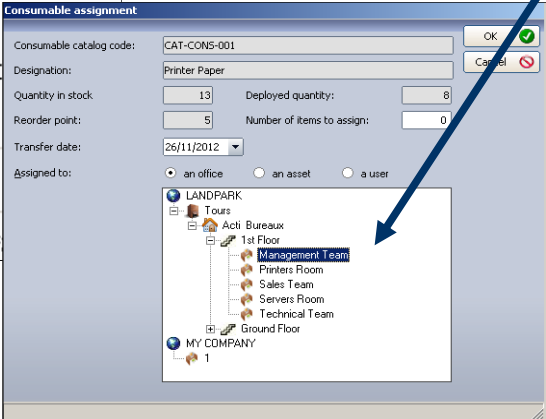
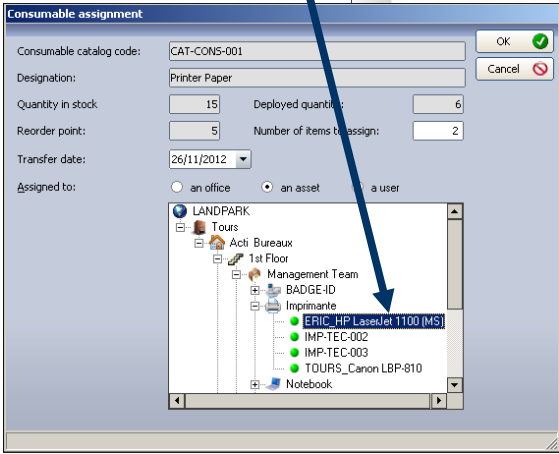
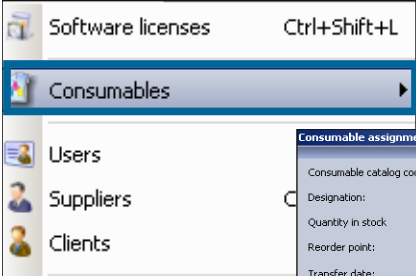


# Management

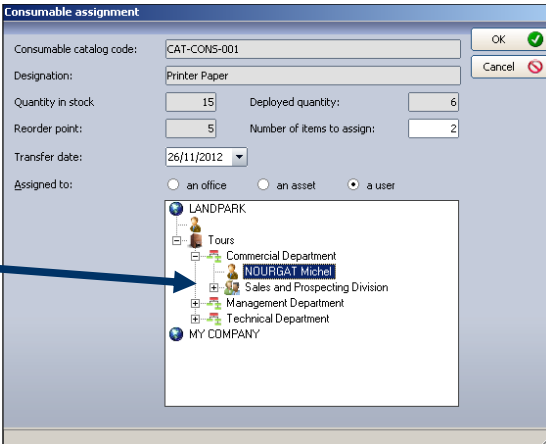


Assignment to an item

Assignment to an office



Assignment to a user



In stock							Active	
Catalog ID	Designation	Date moved	Number	Total price	Assign to	Office		
CAT-CONS-001	Printer Paper	17/09/2007	1	7,00 €	Office	LANDPARK \ Tours \ Acti Bureaux \ 1st Floor \ Management Team		
CAT-CONS-001	Printer Paper	25/09/2007	1	8,00 €	Office	LANDPARK \ Tours \ Acti Bureaux \ 1st Floor \ Management Team		
CAT-CONS-001	Printer Paper	06/10/2007	1	15,00 €	Office	LANDPARK \ Tours \ Acti Bureaux \ 1st Floor \ Management Team		
CAT-CONS-001	Printer Paper	10/10/2007	1	18,00 €	Office	LANDPARK \ Tours \ Acti Bureaux \ 1st Floor \ Sales Team		
CAT-CONS-001	Printer Paper	18/10/2007	1	14,00 €	Office	LANDPARK \ Tours \ Acti Bureaux \ 1st Floor \ Management Team		
CAT-CONS-001	Printer Paper	22/10/2007	1	14,00 €	Office	LANDPARK \ Tours \ Acti Bureaux \ 1st Floor \ Sales Team		
CAT-CONS-001	Printer Paper	23/10/2007	1	15,00 €	Office	LANDPARK \ Tours \ Acti Bureaux \ 1st Floor \ Management Team		
CAT-CONS-001	Printer Paper	27/10/2007	1	6,00 €	Office	LANDPARK \ Tours \ Acti Bureaux \ 1st Floor \ Management Team		
CAT-CONS-001	Printer Paper	30/10/2007	1	10,00 €	Office	LANDPARK \ Tours \ Acti Bureaux \ 1st Floor \ Management Team		
CAT-CONS-001	Printer Paper	12/09/2011	2	24,00 €	Office	LANDPARK \ Tours \ Acti Bureaux \ 1st Floor \ Management Team		
CAT-CONS-001	Printer Paper	29/09/2011	1	0,00 €	Imprimante	LANDPARK \ Tours \ Acti Bureaux \ 1st Floor \ Printers Room \ Imprimante \ IMP-CAN-012		
CAT-CONS-001	Printer Paper	29/09/2011	1	18,00 €	Utilisateur	LANDPARK \ Tours \ Commercial Department \ NOURGAT Michel		
CAT-CONS-001	Printer Paper	14/11/2012	2	39,00 €	Imprimante	LANDPARK \ Tours \ Acti Bureaux \ 1st Floor \ Management Team \ Imprimante \ IMP-TEC-002		
CAT-CONS-001	Printer Paper	26/11/2012	2	8,00 €	Utilisateur	LANDPARK \ Tours \ Commercial Department \ NOURGAT Michel		

# Management



Consumables associated with the printer

Software licenses Ctrl+Shift+L

**Consumables**

Users

Suppliers Ctrl+F

Clients

Catalogs and products

Alerts F2

Sheet of printer

Printer state: Active

Acquisition: Purchase

ID: IMP-TEC-004

Name: TEKTRONIX

Manufacturer: Tektronix

IP address: 10.0.0.255

MAC address: 00.00.3F.00.3F

Subfamily: Color Laser Printer

Mask Code: IMP-###

Serial number: 30521M12

Model: 740 Plus

Connection type: Network

Memory: 64

Shared printer:  Remote administration:

Assigned consumables

Date	Family	Designation	Qty
01/20/2013	Printer Paper	Printer Paper	10
01/20/2013	Printer Paper	Printer Paper	10
06/20/2011	Sticky tape	1 cm wide sticky tape	1

Consumables detail

ID	Family	Designation
CON0097	Printer Paper	Printer Paper
CON0098	Printer Paper	Printer Paper
CON0099	Printer Paper	Printer Paper
CON0100	Printer Paper	Printer Paper

Consumables associated with a Non IT item

Sheet of other asset

D.O. State: Active

Acquisition: Purchase

Internal code: 063-0001

Designation: Cell phone

Manufacturer: Sony - Ericsson

Model: K800i

Comments: 20 hours package comes with 3 batteries

Assigned consumables

Date	Family	Designation	Qty
01/20/2013	Cell phone	Battery	3

Consumables detail

ID	Family	Designation
PORT-0041	Cell phone	Battery
PORT-0042	Cell phone	Battery
PORT-0043	Cell phone	Battery

Sheet of other asset

D.O. State: Active

Acquisition: Purchase

Internal code: 063-0001

Designation: Cell phone

Manufacturer: Sony - Ericsson

Model: K800i

Comments: 20 hours package comes with 3 batteries

Assigned consumables

Date	Family	Designation	Qty
01/20/2013	Cell phone	Battery	3

Consumables detail

ID	Family	Designation
PORT-0041	Cell phone	Battery
PORT-0042	Cell phone	Battery
PORT-0043	Cell phone	Battery

User details

Identifier

Last name: CHAMOIS

First name: Luc

Title/Position: Technical Sales

Person in charge: BESSIN

Profile: Users

Organization: SITE 1 | Tours | Commercial Department | Sales and Prospecting Division

Assigned consumables

Date	Family	Designation	Qty
01/18/2013	Printer Paper	Printer Paper	3
01/20/2013	Printer Paper	Printer Paper	5

Consumables detail

ID	Family	Designation
CON50088	Printer Paper	Printer Paper
CON50089	Printer Paper	Printer Paper
CON50096	Printer Paper	Printer Paper

Consumables associated with the user

Consumables list assigned to the user

Date	Family	Designation	Qty
01/18/2013	Printer Paper	Printer Paper	3
01/20/2013	Printer Paper	Printer Paper	5

Consumables detail

ID	Family	Designation
CON50088	Printer Paper	Printer Paper
CON50089	Printer Paper	Printer Paper
CON50096	Printer Paper	Printer Paper