



MANAGING YOUR SUPPLIER CATALOG WITH LANDPARK MANAGER

Landpark, comprehensive IT Asset Tracking and ITIL Help Desk solutions

Management



Suppliers management

- Software licenses Ctrl+Shift+L
- Consumables
- Users
- Suppliers Ctrl+F**

Supplier list

Logo	Supplier #	Company	Address	Zip code	City	Country
		CANON	20 r Pont de l'Arche	37550	SAINT AVERTIN	France
		COMPAQ FRANCE	5, Allée Gustave Eiffel	92442	ISSY-LES-MOULINEAUX	France
	123	DELL COMPUTER MONTPELLIER	1068, Rue Vieille Porte	34054	MONTPELLIER	France
		FLY	264 av Grand Sud	37170	CHAMBRAY LES TOURS	France
		GATEWAY FRANCE	41, Boulevard des Capucines	75002	PARIS	France
		HEWLETT PACKARD	PA du Bois Briard	91040	EVRY CEDEX	France
		IBM FRANCE	Tour Descartes	92066	PARIS LA DEFENSE	France

Supplier information

Supplier # [123] Save

Company name: DELL COMPUTER MONTPELLIER

Address: 1068, Rue Vieille Porte

Zip: 34054 City: MONTPELLIER Country: France

Additional information: Contact, Email address, Phone #, Web site, SIRET number, Payment type

Reference

Reference	Marque	Model
Complete configuration	Dell Computer Corpc	MS-6380E 1.0
HARD DISK DRIVE	Dell Computer Corpc	125
HARD DISK DRIVE	Dell Computer Corpc	125
Complete configuration	Dell Computer Corpc	MS-6380E 1.0
Complete configuration 001	Dell Computer Corpc	MS-6380E 1.0
HARD DISK DRIVE 001	Dell Computer Corpc	125
Keyboard 001	Compaq	125

Loans management

- Clients
- Catalogs and products
- Alerts F2

Associated elements to the supplier

Update client information

Company	Address	Zip code	City	Country
SGTI	19, Rue Emile Zola	37000	Tours	France

1 records

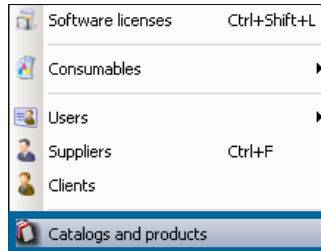
Managing « clients » for loans



Management



Catalog management for your orders
(Non-IT assets, Printers Software PCs
Consumables, ...)



PC configuration catalog



Catalog ID	Sub-family	Designation	Manufacturer	Model	Processor	Processor
CAT_CONFIG-001	WORKSTATION	Complete configuration	Dell Computer Corporation	MS-6380E 1.0	Intel Pentium	

Product reference number	Designation	Manufacturer	Model	Comments
Complete configuration	Complete configuration	Dell Computer Corporation	MS-6380E 1.0	
Complete configuration	Complete configuration	Dell Computer Corporation	MS-6380E 1.0	
Complete configuration 00	Complete configuration	Dell Computer Corporation	MS-6380E 1.0	Computer without screen

Configuration information - Asset

Save Cancel

Catalog ID: CAT_CONFIG-001

Subfamily: Workstation

Code mask: PC-STATION-###

Designation: Complete configuration

Manufacturer: Dell Computer Corporation

Model: MS-6380E 1.0

CPU: Intel Pentium

CPU speed: 1.2 G Mouse

Ram: 512 Keyboard

Operating system: Windows XP

Hard disk drive: Western Digital

Capacity (GB): 40,00

Floppy drive Taille: 1,44

DVD drive Speed: 50 x

Graphics card: Radeon 7500

Monitor: Dell 17 pouces

Configuration information - Details

Save Cancel

Number of floppy disk drives: 0

Number of CD-rom drives: 1

CD burner Speed: 32 x

Number of CD burners: 1

DVD Speed: 16 x

Number of DVD drives: 1

Number of CPUs: 1

Number of serial ports: 2

Number of PS2 ports: 2

Number of parallel ports: 2

Number of USB ports: 4

Modem: Olicec 56000

Management



Software catalog

- Software licenses (Ctrl+Shift+L)
- Consumables
- Users
- Suppliers (Ctrl+F)
- Clients
- Catalogs and products**

Catalog and product management

Computers | Printers | Non-IT assets | **Software** | Consumables

Catalog ID	Sub-family	Software	Publisher	Version	Executable file	Min Qty
CAT-LOG-001	BUREAUTIQUE	Office 2000	Microsoft	2000		2
CAT-LOG-002	BUREAUTIQUE	Acrobat reader 5	Adobe	5.0		10

Product reference number | Designation | Manufacturer | Model | Comments

Buttons: New, Update, Delete, Print

Catalogue Logiciels : 2 records

Software details

Catalog ID: OK Cancel

Subfamily:

Software:

Publisher:

Version:

Executable name:

Minimum quantity:



Management



- Software licenses Ctrl+Shift+L
- Consumables
- Users
- Suppliers Ctrl+F
- Clients
- Catalogs and products**

Printers catalog

Catalog and product management

Computers **Printers** Non-IT assets Software Consumables

Catalog ID	Sub-family	Designation	Manufacturer	Model	Memory	Input tray(s)	Output tray(s)
CAT-IMP-001	LASER	Laser Printer	Hewlett Packard	690 C	64	1	1

Product reference number Designation Manufacturer Model Comments

Printer 002	Laser Printer	Hewlett Packard	690 C	Printer delivered without to

Catalogue Imprimantes : 1 record

Buttons: New, Update, Delete, Print

Printer details

Catalog ID: CAT-IMP-001

Subfamily: LASER

Designation: Laser Printer

Manufacturer: Hewlett Packard

Model: 690 C

Memory: 64

Input tray(s): 1 Output tray(s): 1

Tray 1 format: A4

Tray 2 format: No

Tray 3 format: No

Refill type 1: Standard

Refill type 2: No

Refill type 3: No

Buttons: OK, Cancel



Management



Non-It catalog

- Software licenses Ctrl+Shift+L
- Consumables
- Users
- Suppliers Ctrl+F
- Clients
- Catalogs and products**

Catalog and product management

Computers | Printers | **Non-IT assets** | Software | Consumables

Catalog ID	Family	Sub-family	Designation	Manufacturer	Model
CAT-GEN-CLA	PERIPHERIQUES	KEYBOARD	Special Internet Keyboa	Compaq	125
CAT-GEN-SOU	PERIPHERIQUES	MOUSE	Mouse	Compaq	T 20 e
CAT-GEN-PORT	OBJETS DIVERS	GSM	Cell Phone	Ericson	T 20 e
CAT-GEN-VOIT	OBJETS DIVERS	CAR	Car service	Renault	Megane II
CAT-DISKDUR	DISQUES DURS	INTERNAL	Hard disk	Dell Computer Cor	125
CAT-GEN-ARMOIRES	OBJETS DIVERS	CABINET	CABINET CHERRY	BUROTER	Merisier 90
CAT-GEN-BIP	OBJETS DIVERS	BIP GARAGE	BIP GARAGE HOOMAN	HOOMAN	A132
CAT-GEN-CHAISES	OBJETS DIVERS	CHAIRS	OFFICE CHAIRS	BUROTER	125

Product reference number	Designation	Manufacturer	Model	Comments
Service Car	Service Car	Renault	Megane II	
Service Car	Service Car	Renault	Megane II	

Catalogue Objets Divers : 14 records

Catalog details

Family type: OTHER ASSETS

Catalog ID: CAT-GEN-ARMOIRES

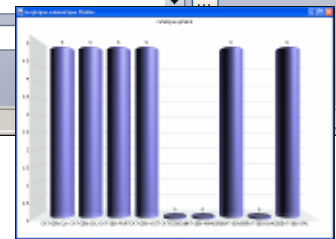
Subfamily: CABINET

Designation: CABINET CHERRY

Manufacturer: BUROTER

Model: Merisier 90

Min. qty: 0



Management



Consumables catalog

- Software licenses Ctrl+Shift+L
- Consumables
- Users
- Suppliers Ctrl+F
- Clients
- Catalogs and products**

Catalog and product management

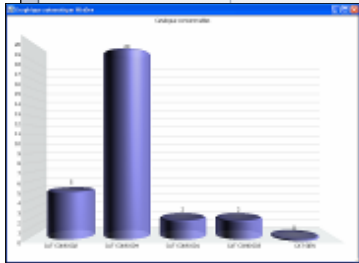
Computers Printers Non-IT assets Software **Consumables**

Catalog ID	Consumable Family	Designation	Manufacturer	Model	Minimum quantity
CAT-CONS-002	Ink Cartridge	Black Ink Cartridge	Hewlett Packard	640 C	5
CAT-CONS-004	Sticky tape	1 cm wide sticky tape	Scotch	10 cm	20
CAT-CONS-001	Printer Paper	Printer Paper	Hewlett Packard	740 Plus	2
CAT-CONS-003	Toner	Black Toner	Tectronic	640 C	2
CAT-GEN	Printer Paper	Paper 2	Scotch	640 C	0

Product reference number Designation Manufacturer Model Comments

Paper 001	Paper for Laser Printer	Hewlett Packard	740	Delivered in 24 hours
-----------	-------------------------	-----------------	-----	-----------------------

Close New Update Delete Print



Sheet of consumables catalog

Catalog ID: CAT-CONS-001

Consumable family: Printer Paper

Designation: Printer Paper

Manufacturer: Hewlett Packard

Model: 740 Plus

Min Qty to order: 2 Reorder point: 5

Initial stock: 11

OK Cancel

Reorder point

