



ACCESS RIGHTS WITH LANDPARK MANAGER

Landpark, comprehensive IT Asset Tracking and ITIL Help Desk solutions



Settings of the access rights

The screenshot shows the Landpark Manager 5.3.8.0 interface. The 'Access control' menu is open, highlighting 'Profiles'. A hardware details window is also open, showing information for a workstation named 'CHAMBORD'. The hardware details include:

- Computer state: Active
- Computer type: Workstation
- Acquisition: Purchase, Activated: 27/10/2007
- Internal code: PC-EIEMPLE, Inventory date: 31/10/2007 00:00:00
- Computer name: CHAMBORD, Serial number: N565942687133
- Manufacturer: MSI, Model: MS-638DE 1.0
- O.S.: Microsoft Windows XP, Memory: 1535 Mb
- Processor: AMD Athlon(tm) 64 3500+ - 2.2 GHz
- Hard disk drive: 2000000 Mo
- Network interface card: Intel(R) Pentium(R) 4 CPU 3.00GHz
- Keyboard: Keyboard Standard 101/102-Key or Microsoft Natural PS/2
- Monitors: Samsung SyncMaster 920N
- Ports: Open Host Controller PCI to USB S5 7001, Extended Host Controller PCI to USB S5
- USB: Standard game port, Open Host Controller PCI to USB S5 7001, Extended Host Controller PCI to USB S5, Aladdin HASP Key, USB Root Hub, Support for USB printing, Aladdin USB Key

Landpark Manager will declare profiles and access rights

User profile

This form allows you to manage profiles list used in the application, which may be associated with one or more users

The screenshot shows two forms for managing user profiles:

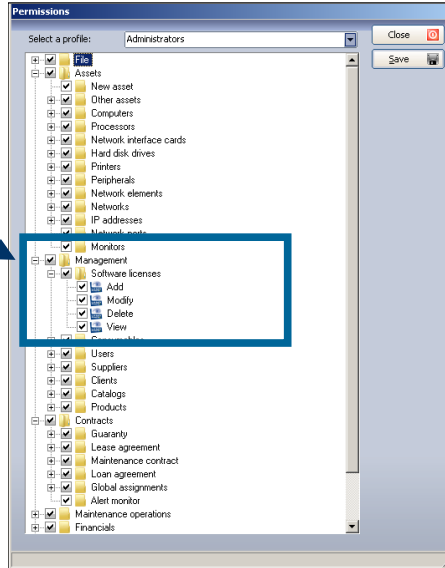
- Profile update:** A form with a dropdown for 'Profile name' (currently showing 'Administrators'), and buttons for 'Close', 'New', 'Modify', 'Delete', and 'Print'.
- Profile details:** A form for editing a profile. It includes:
 - Name: Managing Director
 - Options: Display unmasked passwords, Do not modify user profiles
 - Connected users table:

Last name	First name	Title/Position	Add
BESSIN	Hector	Technical Sales	+

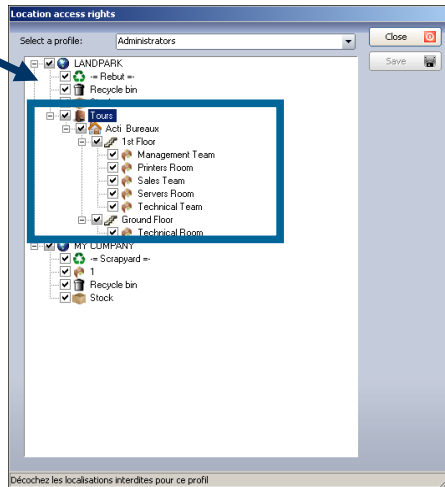


Rights setting

It is from this treeview that you will be able to assign rights for accessing features to a specific user



It is from this treeview that you will be able to assign rights for accessing localization to a specific user



It is from this treeview that you will be able to assign rights for accessing organization to a specific user

