



SCANFREE FREEWARE

For more information on Scanfree Pro

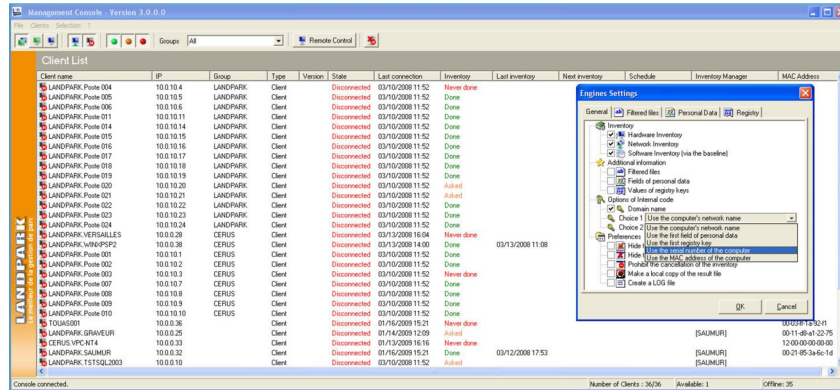
Call us: (33) 2 47 85 86 30 / contact@cerus.net

PROVEN TECHNOLOGY
Landpark's multi-site inventory-tracking capabilities make it the ideal software tool for IT asset management.

EXPERTISE
Thousands of clients have used our software products and benefited from our expertise. Landpark gives technology leaders a more comprehensive and accurate view of their IT assets.

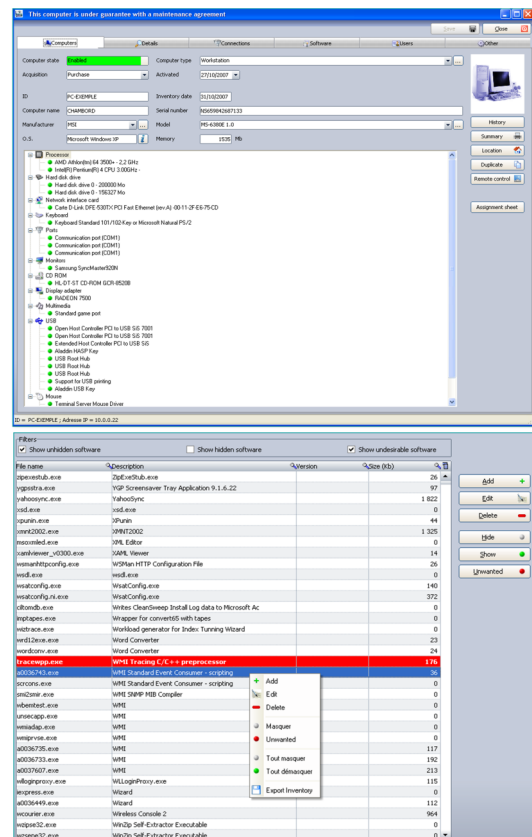
LANDPARK SCANFREE AN EFFICIENT SOLUTION FOR STARTING YOUR INVENTORIES

A FREEWARE SOLUTION FOR YOUR IT ASSET TRACKING NEEDS



- ▶ Organisational and geographic views of your hardware inventories give you rapid access to your IT assets
- ▶ Comprehensive inventory of your hardware and software components (limited to 5 PC without export)
- ▶ Multiple-site treeview access
- ▶ Manage your computers, CPUs, network cards, hard disk drives, printers, monitors and peripherals
- ▶ User management
- ▶ Transfer history
- ▶ Manage your software licenses
- ▶ Retrieve Windows and Office license keys
- ▶ Standard database formats (SQL Express or SQL Server)
- ▶ User-friendly and easy to deploy
- ▶ Our expertise has been recognized by thousands of clients

Thousands of clients have used our software products and benefited from our expertise



SCANFREE PRO

SCANFREE PRO - FULL SOLUTION FOR YOUR IT ASSET TRACKING NEEDS

SCANFREE FREEWARE



LANDPARK TECHNOLOGY

Our technology also includes :

- Landpark Manager (IT Asset Management)
- Landpark Helpdesk (Technical Support Management Tool)
- Landpark Snmp (collects information about your network's Snmp agents)
- Landpark Active Directory OpenLDAP (synchronizes the LandPark user list with your Active Directory/OpenLDAP)

EFFECTIVE COST CONTROL

Our solution allows you to better control your company's acquisition costs, operating expenses, and technical support resources. Monitoring your IT assets more effectively increases user productivity while letting you focus on the appropriate decision-making processes.

AN OFF-THE-SHELF SOLUTION

Monitor and upgrade your IT assets as new requirements come along, reduce implementation costs by tracking those items that are too expensive to maintain, manage software licenses more effectively.

Sheet of software

Internal code	Software family	Software name	Licenses used	Licenses purchase	Version	Publisher	Executable file	Executable size	Modification date
LOG-0020b	Utility	Système de télédist	11		49 6.10.0016.	Microsoft Corj.msnd6.exe		90	10/08/2007
LOG-0014	Utility	WinZip Executable	15		57 10.0 (32-b	Nico Mak. Com.winszip32.exe		1 006	28/07/2007
LOG-0015	Utility	WinZip Self-Extract	11		85 1.0	Nico Mak. Com.winspe32.exe		212	27/07/2007
LOG-0016	Utility	Microsoft Agent Ser	7		33 2.00.0.342	Microsoft Corj.agentsvr.exe		235	04/10/2007
LOG-0017	Utility	msn	10		13 6.10.0016.	Microsoft Corj.msm6.exe		90	22/10/2007
LOG-0013	Utility	Windows Media Play	7		37 6.4.09.112	Microsoft Corj.mplayer2.exe		5	09/09/2007
LOG-0007	Office	Microsoft Office Acc	9		79 10.0.2627	Microsoft Corj.msaccess.exe		5 769	06/09/2007
LOG-0022	Office	Microsoft Visio 2003	16		29 5.1.2600.0	Microsoft Corj.msppodhite.exe		14	07/08/2007
LOG-0020	Office	Partage de Bureau	3		64 4.4.3400	Microsoft Corj.mmsnrv.exe		33	18/09/2007
LOG-0019	Office	Microsoft MapPoint	5		67 5.1.2600.0	Microsoft Corj.mspoint.exe		14	24/07/2007
LOG-0012	Office	WinDev	9		48 7.01.Qcd	PC SOFT Windev7.exe		1 208	15/09/2007
LOG-0010	Office	Microsoft Office Wo	10		86 10.0.2627	Microsoft Corj.winword.exe		10 577	22/07/2007
LOG-0008	Office	Microsoft Office XP	10		30 10.0.2609	Microsoft Corj.msoffice.exe		227	29/10/2007
LOG-0023	Office	Windows@NetMeet	14		28 4.4.3400	Microsoft Corj.mnmddsvr.exe		33	02/09/2007
LOG-0006	Office	Microsoft Office Fro	10		91 10.0.2623	Microsoft Corj.frontpg.exe		2 660	08/10/2007
LOG-0001	Office	Microsoft Windows J	11		30 5.1	Microsoft		171	17/10/2007
LOG-0005	Office	Microsoft Office Exc	4		52 10.0.2614	Microsoft Corj.excel.exe		9 164	03/08/2007
LOG-0002	Management	Application Server	7		9 0.9.8.0	Cerus Inform. lpsserver.exe		630	24/08/2007
LOG-0021	Graphics	Microsoft Monitoring	6		82 5.1.2600.1	Microsoft Corj.mntsdsc.exe		393	10/08/2007
LOG-0018	Graphics	Connexion Bureau à	6		57 5.1.2600.1	Microsoft Corj.mntsdsc.exe		393	27/09/2007
LOG-0004	Graphics	Paint Shop Pro	10		9 2 0 0 0	Jasc Software.tubeconverter.exe		639	11/09/2007

Software

Update computer

IP	Internal code	Computer type	Inventory date	Computer name	Status	ManufactModel	Serial number	Login	RAM	Operat
	PC-ADMT - 14	Workstation	27/10/2007	PC-ADMT - 14	Active	MSI MS-6380E 1.0	621231315	cbianloel	512	Micros
	PC-CMPT - 15	Workstation	21/10/2007	PC-CMPT - 15	Active	MSI MS-6380E 1.0	1231355654	cbianloel	512	Micros
	PC-EMPLE	Workstation	31/10/2007	CHAMBORD	On loan	MSI MS-6380E 1.0	N6559642697133	LANDPARK\cbianloel	1 535	Micros
	PC-INGL - 17	Workstation	21/10/2007	PC-INGL - 17	Active	MSI MS-6380E 1.0	6465945128465	cbianloel	512	Micros
	PC-INGL - 19	Workstation	23/10/2007	PC-INGL - 19	Serviced	MSI MS-6380E 1.0	6546432154563	cbianloel	512	Micros
	PC-INGL - 20	Workstation	23/10/2007	PC-INGL - 20	Serviced	MSI MS-6380E 1.0	65412345684165	cbianloel	512	Micros
	PC-STATION-0004	Workstation	26/10/2007	PC-STATION-0004	Active	Compaq MS-6380E 1.0	456456513289	cbianloel	512	WINDI
	PC-STATION-0005	Workstation	25/10/2007	PC-STATION-0005	Serviced	MSI MS-6380E 1.0	456456513289	cbianloel	512	WINDI
	PC-STATION-0006	Workstation	27/10/2007	PC-STATION-0006	Active	MSI System Name System	456456513289	cbianloel	512	WINDI
	PC-STATION-0007	Workstation	21/10/2007	PC-STATION-0007	Active	MSI MS-6199 1.X	456456513289	cbianloel	512	WINDI
	PC-STATION-0008	Workstation	22/10/2007	PC-STATION-0008	Active	MSI MS-6199 1.X	12345645266	cbianloel	512	WINDI
	PC-STATION-0009	Workstation	27/10/2007	PC-STATION-0009	Serviced	MSI MS-6199 1.X	45698513513	cbianloel	512	WINDI
	PC-VENT - 10	Notebook	29/10/2007	PC-VENT - 10	Active	MSI MS-6380E 1.0	6211231211123	cbianloel	512	Micros
	PC-VENT - 11	Notebook	30/10/2007	PC-VENT - 11	Active	MSI MS-6380E 1.0	5645301324564	cbianloel	512	Micros
	PC-VENT - 12	Notebook	21/10/2007	PC-VENT - 12	Active	MSI MS-6380E 1.0	6542123154563	cbianloel	512	Micros
	PC-VENT - 13	Notebook	20/10/2007	PC-VENT - 13	Active	MSI MS-6380E 1.0	345645645132	cbianloel	512	Micros
	PC-VENT - 21	Notebook	24/10/2007	PC-VENT - 21	Active	MSI MS-6380E 1.0	123456456599	cbianloel	512	Micros
	PC-VENT - 22	Notebook	30/10/2007	PC-VENT - 22	Active	MSI MS-6380E 1.0	231321232	cbianloel	512	Micros
	PC-VENT - 23	Notebook	22/10/2007	PC-VENT - 23	Active	MSI MS-6380E 1.0	65412318465	cbianloel	512	Micros
	PC-VENT - 24	Notebook	29/10/2007	PC-VENT - 24	Maintenance	MSI MS-6380E 1.0	32123132123	cbianloel	512	Micros
	PC-VENT - 25	Notebook	27/10/2007	PC-VENT - 25	Active	MSI MS-6380E 1.0	9451684523132	cbianloel	512	Micros
	SRV-DOWN - 27	Data Server	30/10/2007	SRV-DOWN - 27	Active	MSI MS-6380E 1.0	123123132123	cbianloel	512	Micros
	SRV-DOWN - 28	Data Server	23/10/2007	SRV-DOWN - 28	Active	MSI MS-6380E 1.0	321231564645	cbianloel	512	Micros
	SRV-FICH - 26	Files Server	23/10/2007	SRV-FICH - 26	Active	MSI MS-6380E 1.0	2131256464	cbianloel	512	Micros
	SRV-IMP - 29	Print Server	22/10/2007	SRV-IMP - 29	Active	MSI MS-6380E 1.0	654987213123	cbianloel	512	Micros
	YPC-W2K3EN_NEW	Workstation	20/01/2011	YPC-W2K3EN	In stock	Microsoft/Virtual Machine	6352-8717-5307-3104-Administrator		64	Micros

PC's

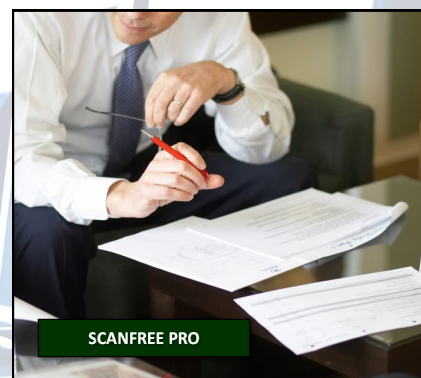
System requirements

Server

- ▶ Multiple user access,
- ▶ Windows XP and superior,
- ▶ Ethernet network supported under Windows XP and superior,
- ▶ Supported database software: 2005 Express, SQL Server 2005
- ▶ Hardware requirements: 50 Mb disk space (excluding database)
256 Mb RAM

Client

- ▶ OS : Windows XP and superior,
- ▶ Hardware requirements : 30 Mb disk space, 128 Mb RAM



LANDPARK

41 rue de La Milletière
37100 Tours, France
Phone : (33) 2 47 85 86 30
Fax : (33) 2 47 51 48 77

SCANFREE PRO - FULL SOLUTION FOR YOUR IT ASSET TRACKING NEEDS