

LANDPARK SNMP

ANTICIPATE CHANGES

Landpark Snmp allows you to rapidly create a comprehensive inventory of all the active elements of your network. It is essential to retrieve accurate data from your network inventories before importing the underlying information into your asset management software.

LANDPARK SNMP

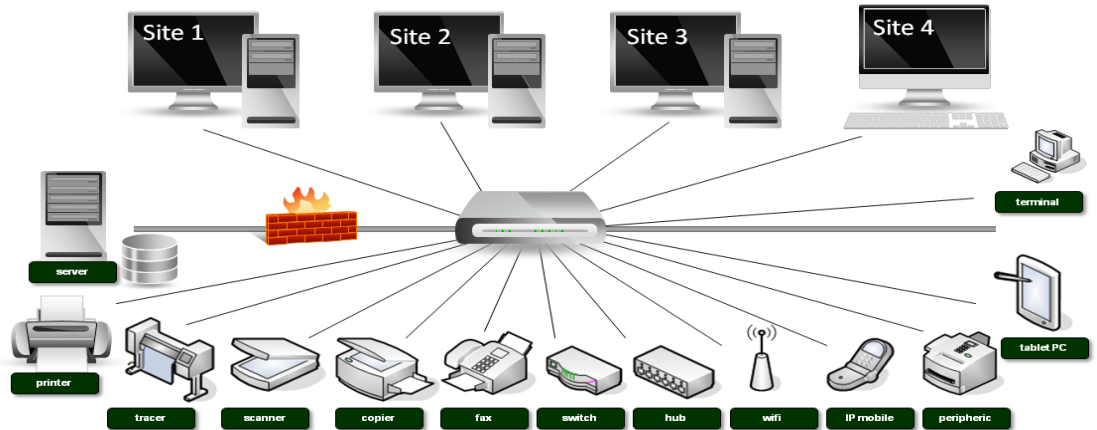
Ideal for fast and detailed analysis of your network elements.



41 rue de La Milletière
37100 Tours, France
Téléphone : 00 (33) 2 47 85 86 30
Télécopie : 00 (33) 2 47 51 48 77
<http://www.landparksoftware.com/en/home>

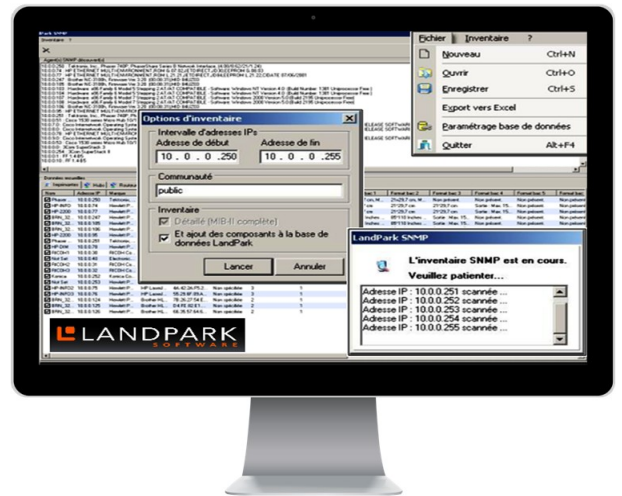
LANDPARK SNMP

Ideal for fast and detailed analysis of your network elements



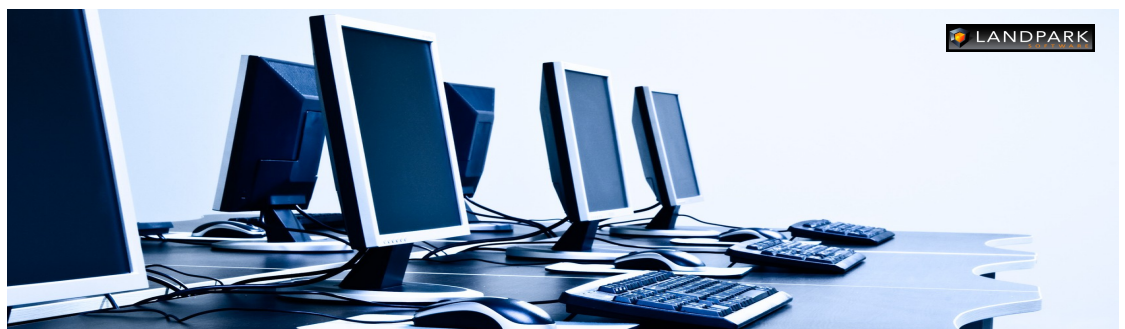
Carries out a complete inventory of the active elements of your network.

- ▶ SNMP device information is transparently collected: result files are analyzed exhaustively to produce an accurate summary of the devices that were detected: printers, routers, hubs, switches, servers etc
- ▶ Quickly find and manage the exact configuration of your network elements by searching through an IP address range and visualize the results immediately before importing the information into Scanfree Pro.
- ▶ When imported into your Scanfree Pro, results can be classified as network elements or non-IT assets.
- ▶ Use our treeview-based asset explorer to display detailed information.
- ▶ Our easily configurable interface allows you to export results to Excel or Txt formats for easier processing of your inventory items.



System requirements

- ▶ Minimum Windows 9x
- ▶ Hardware requirement: 8 Mo disk space



A 100% COMPLETE INVENTORY OF YOUR NETWORK