



LANDPARK SNMP

For more information
on Landpark Snmp

Call us: (33) 2 43 46 53 67 / contact@cerus.net

ANTICIPATE CHANGES

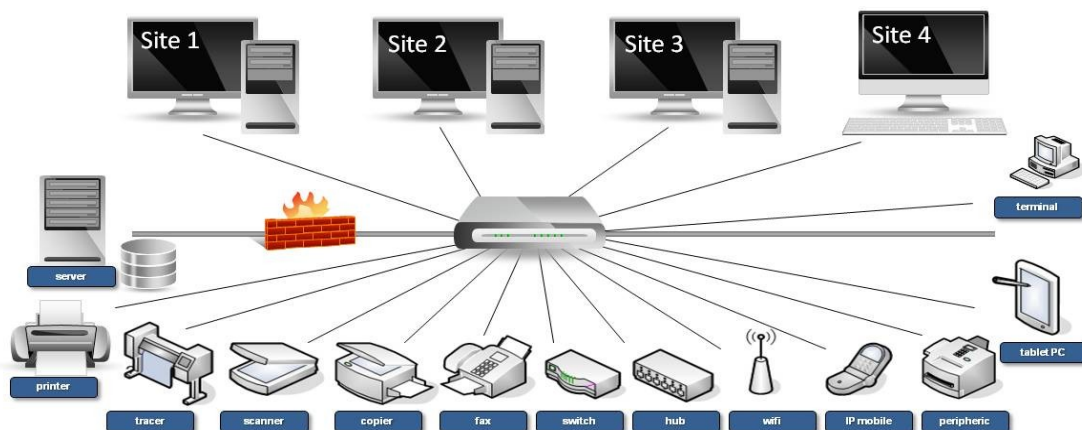
Landpark Snmp allows you to rapidly create a comprehensive inventory of all the active elements of your network. It is essential to retrieve accurate data from your network inventories before importing the underlying information into your asset management software.

LANDPARK SNMP

Ideal for fast and detailed analysis of your network elements.

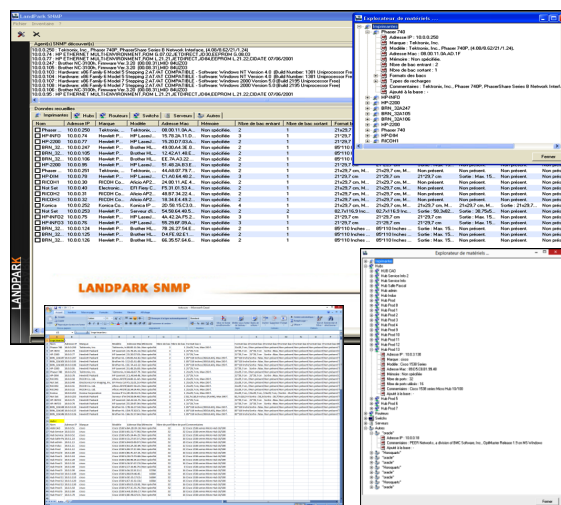
LANDPARK SNMP

Ideal for fast and detailed analysis of your network elements



Carries out a complete inventory of the active elements of your network

- ▶ SNMP device information is transparently collected: result files are analyzed exhaustively to produce an accurate summary of the devices that were detected: printers, routers, hubs, switches, servers etc
- ▶ Quickly find and manage the exact configuration of your network elements by searching through an IP address range and visualize the results immediately before importing the information into your asset management software (Landpark).
- ▶ When imported into your Landpark, results can be classified as network elements or non-IT assets.
- ▶ Use our treeview-based asset explorer to display detailed information.
- ▶ Our easily configurable interface allows you to export results to Excel or Txt formats for easier processing of your inventory items.



SYSTEM REQUIREMENTS

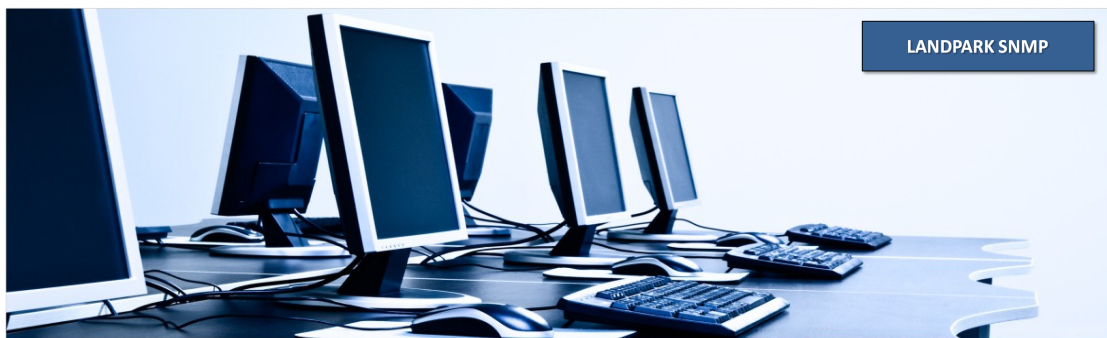
- ▶ Minimum Windows 9x
- ▶ Hardware requirement: 8 Mo disk space



For more information
on Landpark Snmp

Call us: (33) 2 43 46 53 67 / contact@cerus.net

La Couetterie
72500 Beaumont Pied de Boeuf
France
Téléphone : 02 43 46 53 67
Email : contact@cerus.net
<http://www.landparksoftware.com>



DISCOVER RAPIDLY YOUR NETWORK AND GET A REAL-TIME VIEW OF YOUR CRITICAL SNMP-ENABLED NETWORK DEVICES